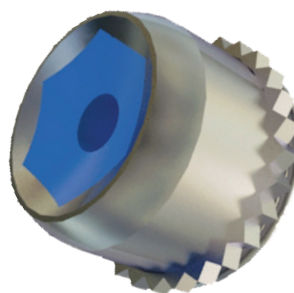
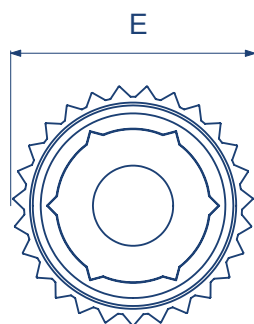
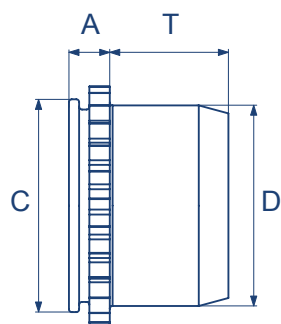


# Nylon Lock Nut

TR-PL/TR-PLC

Zinc Plated Steel : TR-PL | Stainless Steel: TR-PLC



## Metric Dimensions

Thread	M3	M4	M5
Steel	ST	ST	ST
Stainless steel	A2	A2	A2
A (shank) max	1.53	1.53	1.53
Sheet thickness	1.0 - 1.78	1.0 - 1.78	1.0 - 1.78
Hole size in sheet +0.08	6	7.5	8
C max	5.98	7.48	7.98
D max	5.52	7.01	7.52
E max	7.01	8.54	9
T max	3.56	4.2	4.45
Min dist to edge of sheet	4.32	5.59	6.35
Max hole in attached parts	3.5	4.5	5.5

ST - Steel

A2 - Stainless steel

## Metric Performance Data: TR-PL / TR-PLC

Thread		M3	M4	M5
Maximum tightening torque (Nm)		1.13	2.30	3.12
1.5mm 5052-H34 aluminium	Installation (kN)	8.90	8.90	8.90
	Push out (N)	1000	1290	1330
	Torque out (Nm)	2.25	6.77	7.90
1mm 5052-H34	Installation (kN)	6.67	6.67	6.67
	Push out (N)	710	800	800
	Torque out (Nm)	2.25	3.16	4.51
1.5mm cold-rolled steel	Installation (kN)	13.34	13.34	13.34
	Push out (N)	1156	1290	1557
	Torque out (Nm)	2.25	6.77	7.90
1.2mm cold-rolled steel	Installation (kN)	13.34	13.34	13.34
	Push out (N)	1000	1200	1380
	Torque out (Nm)	2.25	6.77	7.90

These tests have been conducted in laboratory conditions, these figures should therefore be used for guidance only.

All data is correct to the best of our knowledge, however TR cannot be held responsible for any errors or omissions.