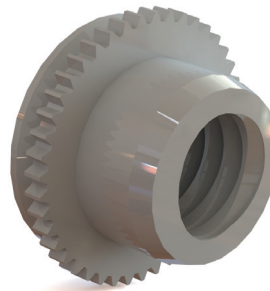
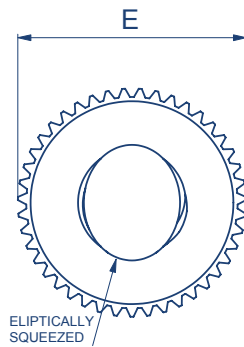
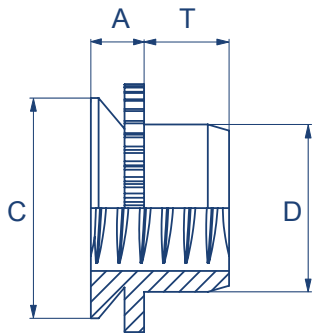


# Self-Locking Mini Squeezed Nut

TR-UL/TR-FE/TR-FEO



## Stainless Steel : TR-UL / TR-FE / TR-FEO



## Metric Dimensions: TR-UL

Thread	M2
E	4.07
A	0.79
C	3.60
D	2.50
T	1.65
Sheet thickness	0.76 - 0.91
Hole size in sheet +0.08 -0.0	3.61
Minimum distance to edge of sheet	2.80

## Metric Dimensions: TR-FE / TR-FEO

Thread		M3	M4	M5	M6
E		4.88	8.17	8.17	9.74
A	FE	1.53	1.52	1.53	1.53
	FEO	1.02	1.02	1.02	
C		4.37	7.37	7.37	8.72
D		3.96	5.23	6.48	7.72
T		1.9	2.55	3.05	3.3
Sheet thickness	FE	1.5 - 1.78	1.5 - 1.78	1.5 - 1.78	1.5 - 1.78
	FEO	0.99 - 1.14	0.99 - 1.14	0.99 - 1.14	
Hole size in sheet +0.08 -0.0		4.39	7.39	7.39	8.74
Minimum distance to edge of sheet		3.6	5.2	5.2	7.1