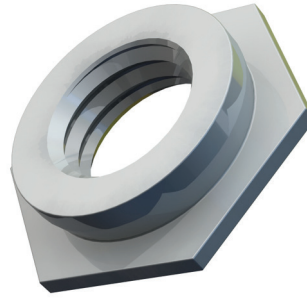
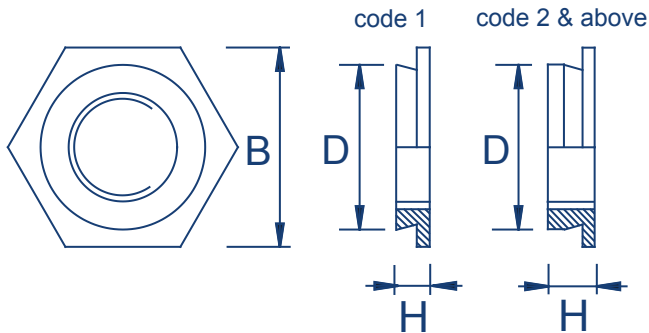


Flush Nuts

TR-F

Stainless Steel : TR-F



Metric Dimensions

Thread	M2, M2.5		M3		M3alt		M3.5		M4		M5		M6		
Code	-1	-2	-1	-2	-1	-2	-1	-2	-1	-2	-1	-2	-3	-4	-5
D max	4.35		4.35		5.35		5.35		7.35		7.90		8.72		
B nom	4.8		4.8		6.4		6.4		7.9		8.7		9.5		
H max	1.53	2.3	1.53	2.3	1.53	2.3	1.53	2.3	1.53	2.3	1.53	2.3	3.05	3.84	4.63
Sheet thickness	1.53 - 2.3	2.32 min.	1.53 - 2.3	2.32 min.	1.53 - 2.3	2.32 min.	1.53 - 2.3	2.32 min.	1.53 - 2.3	2.32 min.	1.53 - 2.3	2.32 min.	3.18 - 3.94	3.96 - 4.72	4.75 min.
Hole size +0.08 -0.00	4.37		4.37		5.4		5.4		7.37		7.92		8.74		
Min distance to edge of sheet	6.0		6.0		6.5		6.5		7.2		8.8		8.8		

Metric Performance Data: TR-F

Thread	M2, M2.5		M3		M3alt		M3.5		M4		M5		M6		
Code	-1	-2	-1	-2	-1	-2	-1	-2	-1	-2	-1	-2	-3	-4	-5
Test sheet thickness (steel)	1.5	2.3	1.5	2.3	1.5	2.3	1.5	2.3	1.5	2.3	1.5	2.3	3.1	3.9	4.75
Installation (kN)	13.5		13.5		13.5		13.5		18		18		20		
Pushout (kN)	0.9		0.9		1.1		1.1		1.2		1.2		3.7		

These tests have been conducted in laboratory conditions, these figures should therefore be used for guidance only.

All data is correct to the best of our knowledge, however TR cannot be held responsible for any errors or omissions.

F - Recommended for use in sheet hardness: HRB 70 Maximum