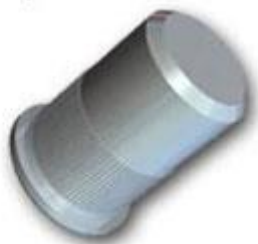


**Blind Rivet Nuts - Knurled body - Closed end - Flange head**

Materials/Finishes:  
 Steel/Zinc & yellow  
 Stainless steel/Self colour (non-preferred)  
 Aluminium/Self colour (non-preferred)



**FLG/CESTKG**

d Thread	L mm	e mm	r mm	Hole size mm	D mm	B mm	s mm
M4	15.5	0.3-3.0	-	6.0	5.9	9.0	1.0
M5	18.0	0.3-3.0	-	7.0	6.9	10.0	1.0
M6	20.5	0.5-3.0	-	9.0	8.9	12.0	1.5
M8	25.0	0.5-3.0	-	11.0	10.9	15.0	1.5