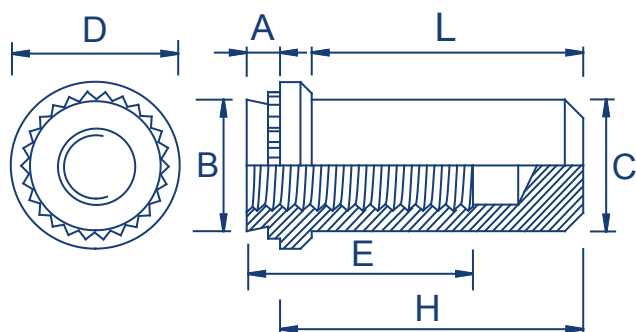


Blind Nuts

TR-B/TR-BS

Zinc Plated Steel : TR-B | Stainless Steel : TR-BS



Metric Dimensions

Thread	M3		M4		M5		M6	
Shank code	1	2	1	2	1	2	1	2
A max	0.97	1.38	0.97	1.38	0.97	1.38	1.38	2.21
Min sheet thickness	1	1.4	1	1.4	1	1.4	1.4	2.29
Hole size +0.08 -0.00	4.22		5.41		6.35		8.75	
B max	4.20		5.38		6.33		8.73	
C max	3.84		5.2		6.02		7.8	
D ±0.25	6.35		7.95		8.75		11.1	
E min	5.3		7.1		7.1		7.8	
H ±0.25	9.6		11.2		11.2		14.3	
L max	8.5		9.8		9.8		12.7	
Min distance to hole c/l to edge	4.8		6.9		7.1		8.6	

Metric Performance Data: TR-B / TR-BS

Thread	M3		M4		M5		M6	
Code	1	2	1	2	1	2	1	2
Sheet thickness	1	1.4	1	1.4	1	1.4	1.4	2.3
Installation (kN)	11.5	14	16	21	18	25	26	26
Pushout (N)	572	1021	604	1256	631	1419	1782	1782
Torque out (Nm)	1.7	2.15	3.5	5.1	4.1	6.9	11.9	12

These tests have been conducted in laboratory conditions, these figures should therefore be used for guidance only.

All data is correct to the best of our knowledge, however TR cannot be held responsible for any errors or omissions.

Test material cold rolled.