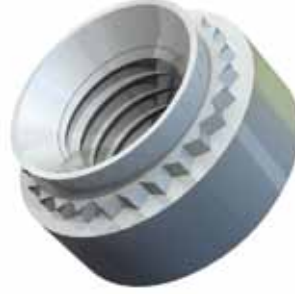
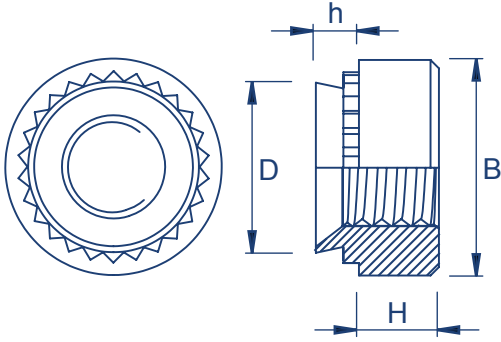


TR Hank® Self-Clinch Nuts



Zinc Plated Steel : TR-S | Stainless Steel : TR-CLS | *400 Series Stainless Steel : TR-SP4 | *A286 Stainless Steel : TR-SP2 | *Aluminium : TR-CLA



Metric Dimensions: TR-S - TR-CLS - TR-SP4 - TR-SP2

Thread	M2, M2.5, M3				M3alt			M3.5			M4			
Code	-0	-1	-2	-3	-0	-1	-2	-0	-1	-2	-0	-1	-2	-3
D max	4.20				4.73			4.73			5.38			
B±0.2	6.35				7.1			7.1			7.95			
H±0.25	1.5				1.5			1.5			2.0			
h max	0.77	0.97	1.38	2.21	0.77	0.97	1.38	0.77	0.97	1.38	0.77	0.97	1.38	2.21
Min rec sheet thickness	0.8	1.0	1.4	2.3	0.8	1.0	1.4	0.8	1.0	1.4	0.8	1.0	1.4	2.3
Hole size +0.08 -0.00	4.22				4.75			4.75			5.41			
Min distance to edge of sheet	4.08				5.6			5.6			6.9			

Thread	M5				M6				M8			M10		M12
Code	-0	-1	-2	-3	0	-1	-2	-3	-1	-2	-3	-1	-2	-1
D max	6.33				8.73				10.47			13.97		16.95
B±0.2	8.75				11.10				12.65			17.35		20.55
H±0.25	2.0				4.08				5.47			7.48		8.5
h max	0.77	0.97	1.38	2.21	1.15	1.38	2.21	3.05	1.38	2.21	3.05	2.21	3.05	3.05
Min rec sheet thickness	0.8	1.0	1.4	2.3	1.2	1.4	2.3	3.2	1.4	2.3	3.2	2.31	3.18	3.18
Hole size +0.08 -0.00	6.35				8.75				10.5			14.0		17
Min distance to edge of sheet	7.1				8.6				9.7			13.5		16



TR Hank® Self-Clinch Nuts



Metric Dimensions: TR-CLA

Thread	M2		M3		M3.5		M4		M5		M6	
Code	-1	-2	-1	-2	-1	-2	-1	-2	-1	-2	-1	-2
D max	4.22		4.73		5.38		5.97		7.47		8.72	
B±0.2	6.3		6.3		7.1		7.9		9.5		11.05	
H±0.25	1.5		2.0		2.0		3.0		3.8		4.08	
h max	0.98	1.38	0.98	1.38	0.98	1.38	0.98	1.38	0.98	1.38	1.38	2.21
Min rec sheet thickness	1.0	1.4	1.0	1.4	1.0	1.4	1.0	1.4	1.0	1.4	1.4	2.3
Hole size +0.08 -0.00	4.25		4.75		5.4		6.0		7.5		8.75	
Min distance to edge of sheet	4.8		5.6		6.9		7.1		7.9		8.6	

Metric Performance Data: TR-S - TR-CLS Into cold rolled Steel

Thread	M2, M2.5			M3				M3alt			M3.5			M4			
Code	0	-1	-2	0	-1	-2	-3	0	-1	-2	0	-1	-2	0	-1	-2	-3
Installation (kN)	11.2 - 15.6			11.2 - 15.6				13.4 - 26.7			13.4 - 26.7			18 - 27			
Torsional Resistance (Nm)	1.5	1.75	2	1.5	1.75	2	2.1	1.8	2.4	2.4	1.8	2.4	2.4	3	4	5	4.2
Pushout (N)	480	560	1020	480	560	1020	1110	485	575	1200	485	575	1200	495	650	1255	1300

Thread	M5				M6			M8			M10		M12
Code	0	-1	-2	-3	-1	-2	-3	-1	-2	-3	-1	-2	-1
Installation (kN)	18 - 38				27 - 36			27 - 36			32 - 50		33-49
Torsional Resistance (Nm)	3.7	4.5	6.9	6	17.1	17.1	16.4	18.8	20.4	18.1	36.1	36.1	73.9
Pushout (N)	535	801	1115	1500	1765	1765	1755	1870	1870	1860	2021	2021	3065

Metric Performance Data: TR-SP4 Into 304 Stainless Steel

Thread	M2, M2.5			M3			M4			M5			M6		M8	
Code	0	-1	-2	0	-1	-2	0	-1	-2	0	-1	-2	-1	-2	-1	-2
Installation (kN)	35	40	45	35	40	45	40	44	46	42	46	51	60	66	66	72
Torsional Resistance (Nm)	-	-	-	1.6	2	2.3	3.4	4.2	5.1	4	5.1	6.7	17	19	19	21.8
Pushout (N)	580	720	1290	580	720	1290	650	800	1590	805	1030	1780	2005	2300	2100	2415

*Aluminium available on request

S - Recommended for use in sheet hardness: HRB 80 Maximum
 CLS - Recommended for use in sheet hardness: HRB 70 Maximum
 SP - Recommended for use in sheet hardness: HRB 90 Maximum
 CLA - Recommended for use in sheet hardness: HRB 50 Maximum

