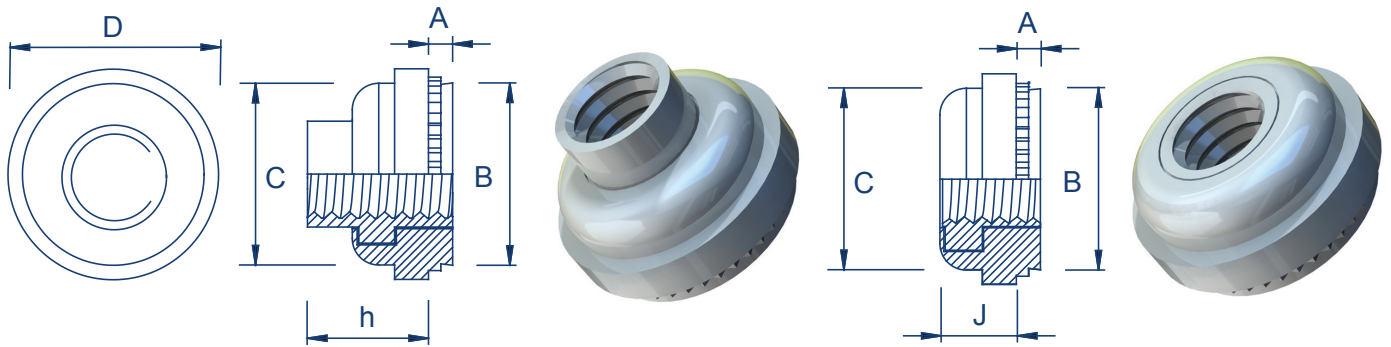


Floating Fasteners - Locking & Non-Locking

TR-LAS/TR-AS/TR-LAC/TR-AC



Zinc Plated Steel : TR-LAS / TR-AS | Stainless Steel : TR-LAC / TR-AC



Metric Dimensions

Thread	M3		M4		M5		M6
Code	1	2	1	2	1	2	2
A max	0.97	1.38	0.97	1.38	0.97	1.38	1.38
Min sheet thickness	0.97	1.38	0.97	1.38	0.97	1.38	1.38
Hole size +0.08	7.37		9.35		10.31		13.08
B max	7.35		9.33		10.29		13.06
C max	7.37		9.28		10.29		12.96
D ±0.4	9.14		11.18		11.94		15.24
h max - TR-LAS & TR-LAC	4.83		5.34		6.86		7.88
J max - TR-AS & TR-AC	3.31		3.31		4.32		5.34
Min distance to hole C/L to edge	7.62		8.64		9.14		10.67

Metric Performance Data: TR-LAS / TR-AS / TR-LAC / TR-AC

Thread	M3		M4		M5		M6	
Code	1	2	1	2	1	2	2	
Sheet thickness	1	1.6	1	1.6	1	1.6	1.6	
Installation (kN)	TR-LAS & TR-LAC	13.3	13.3	13.3	13.3	15.6	15.6	22.2
	TR-AS & TR-AC	13.4	13.4	13.4	13.4	15.7	15.7	22.3
Test material - Cold rolled steel	Pushout (N)	1341	1340	1338	1784	1789	2009	2226
	Torque out (Nm) - TR-LAS & TR-LAC	9.7	17	17.1	22.8	16.9	22.9	36.9
	Torque out (Nm) - TR-AS & TR-AC	9.8	17.2	17	22.9	17	22.9	36.9

These tests have been conducted in laboratory conditions, these figures should therefore be used for guidance only.

All data is correct to the best of our knowledge, however TR cannot be held responsible for any errors or omissions.