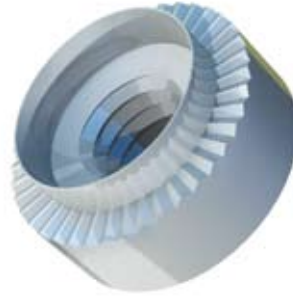
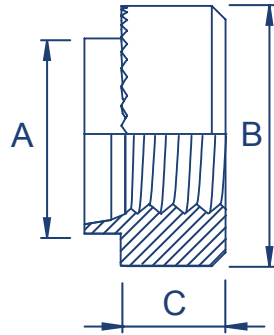
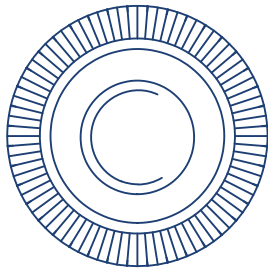


TR Hank® Rivet Bushes Mini Sert (RM)



Steel/Zinc & Clear (TC1) | Steel/Self Finish (SF) | Stainless Steel/Self Finish (SF)



Metric Dimensions

Thread form		M2	M2.5	M3	M3.5	M4	M5	M6	M8	M10	M12
Diameter of spigot +0.00 -0.13mm	A	3.50	4.19	4.19	5.41	5.41	6.40	7.70	9.70	12.70	15.87
Diameter across body ±0.15mm	B	5.00	5.50	5.50	7.00	7.00	8.50	10.00	12.00	16.00	19.00
Depth of body ±0.13mm	C	2.30	2.80	2.80	3.20	3.20	3.80	5.10	6.50	7.60	10.20
Recommended hole size +0.05 -0.00mm		3.50	4.19	4.19	5.41	5.41	6.40	7.70	9.70	12.70	15.87

Imperial/Unified Dimensions

Thread form	BSW/F	-	-	1/8"	-	5-32"	3/16"	1/4"	5/16"	3/8"	1/2"
	BA	8	-	6	4	3	2	0	-	-	-
	UNC	2	-	4	6	8	10	1/4"	5/16"	3/8"	1/2"
	UNF	2	-	4	6	8	10	1/4"	5/16"	3/8"	1/2"
Diameter of spigot +0.00 -0.05"	A	.138	.165	.165	.213	.213	.252	.303	.382	.500	.625
Diameter across body +0.010"	B	.197	.217	.217	.276	.276	.335	.394	.472	.625	.750
Depth of body ±0.005"	C	.091	.110	.110	.126	.126	.150	.201	.265	.300	.400
Recommended hole size +0.002 -0.000"		.138	.165	.165	.213	.213	.252	.303	.382	.500	.625

Please note: when ordering Mini Serts please ensure that the sheet thickness the part is being applied to is expressed in mm and **NOT** swg

All Imperial/Unified sizes are non-preferred - please enquire for availability

Other materials and finishes are available upon request

All data is correct to the best of our knowledge, however TR cannot be held responsible for any errors or omissions.