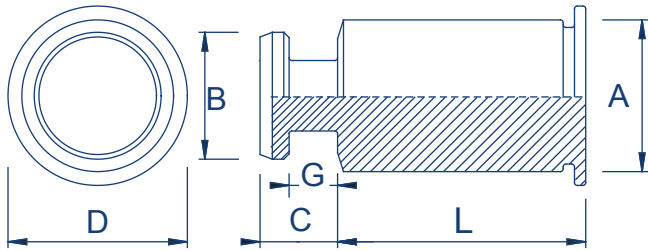


Hole Slide Lock Standoffs

TR-SKC



Stainless Steel : TR-SKC



Metric Dimensions

Body size - Sheet code	61.5	D nom	6.35
A max	5.39	G ± 0.08	1.73
B ±0.08	4.5	Hole + 0.08	5.5
C max	2.75		

Length code 'L' mm ±0.13

2	4	6	8	10	12	14	16	18	20	22	25
---	---	---	---	----	----	----	----	----	----	----	----

Metric Performance Data: TR-SKC

Test sheet material	1.52mm Cold-rolled Steel		1.52mm 5052-H34 Aluminium	
Body sheet code	Installation (kN)	Pushout (N)	Installation (kN)	Pushout (N)
61.5	14.3	2650	7	1100

Part number	Panel 1 - Metal HRB50					Panel 2 - PC board or metal					
	Bottom mounting hole +0.08	Hardness max.	Thickness min.	Edge distance min.	Location tolerance max.	Top mounting hole +0.08				Thickness range	Edge distance min.
						A1 nom.	A2 ±0.08	A3 ±0.08	A4 min.		
TR-SKC	5.4	HRB 70	1	6.6	±0.13	1.5	3	5	3.75	1.45-1.62	4.1

SKC - Recommended for use in sheet hardness: HRB 70 Maximum

