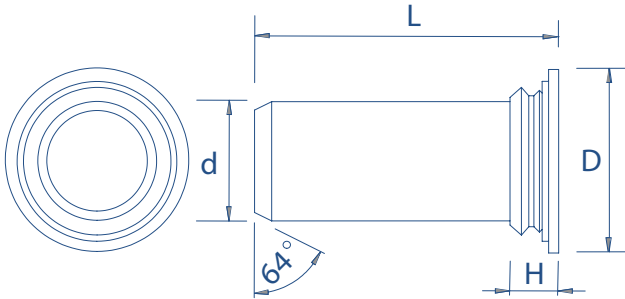


TR Hank® Self-Clinch Flush Head Pins



Zinc Plated Steel : TR-TP | Stainless Steel : TR-TPS



Metric Dimensions

Pin diameter +/- 0.05	Min sheet thickness	Hole size in sheet + 0.08	D +/- 0.4	H max	Min. distance hole C/L to edge
3mm	1	3.5	5.20	2.29	6.4
4mm	1	4.5	6.12	2.29	7.1
5mm	1	5.5	7.19	2.29	7.6
6mm	1	6.5	8.13	2.29	7.9

Preferred Range

Pin diameter P±0.05		3	4	5	6
Length ±0.4	6	●			
	8	●	●	●	
	10	●	●	●	●
	12	●	●	●	●
	16	●	●	●	●
	20		●	●	●

Metric Performance Data: TR-TP

Pin diameter code	3mm	4mm	5mm	6mm
Test sheet material	Steel	Steel	Steel	Steel
Installation (kN)	23	27	35	40
Pushout (kN)	1	1.6	1.8	2.2

These tests have been conducted in laboratory conditions, these figures should therefore be used for guidance only.

All data is correct to the best of our knowledge, however TR cannot be held responsible for any errors or omissions.

TPS - Recommended for use in sheet hardness: HRB 70